



Kitchens + Bars

FUNCTIONAL BEAUTY
AT THE HEART OF YOUR HOME.



LACQUER BAR + COLLECTOR'S SHELVING

As shown:

Bar: 80"W x 36"H x 23"D

*Polished Lacquer, Warm Brass Inlays,
Contour Inlay Pulls + Bronze Clad Panel*

Wall Mounted Shelving Unit: 72"W x 53"H x 14"D

Oxidized Oak | Warm Brass | Glass | Light Bar







CHARRED PINE + BRASS BAR WITH COLLECTOR'S SHELVING

As shown:

*Bar: 84"W x 39"H x 25"D | Bronze Counter + Integral Sink
Charred Pine | Polished Watery Bronze | Oxidized Bronze Contour Pulls*

*Wall Mounted Shelving: 78"W x 39"H x 16"D
Gunmetal | Bronze | Glass*



GUNMETAL + WALNUT BAR

As Shown: Bar 76"W x 102"H x 24"D
Vista Upper Cabinets, Silvered Walnut Panels
+ Contour Style Pulls
Gunmetal | Walnut | Bronze | Glass



LACQUER BAR WITH INTEGRAL SINK + COLLECTOR'S SHELVING

*As Shown: Bar 57"W x 36"H x 24"D
with Inlaid Maker Style Pulls + Warm Brass Inlays
Polished Lacquer | Warm Brass | Watery Brass*

*Wall Mounted Shelving: 52"W x 39"H x 16"D
Warm Brass | Glass | Light Bars | Stemware Holders*



FRANKFORD PANTRY
+ BRASS CLAD PANTRY CABINETS

As Shown:

Lower Cabinets: 56" W x 36" H x 20" D

Upper Cabinets: 54" W x 52" H x 15" D

Warm Brass | Glass | Contour Pulls



BRASS CLAD PANTRY

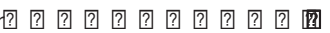
As Shown: 48"W x 92"H x 24"D

*Brass Backsplash, Counter Surround, Knife Edge Uppers + Lower Cabinetry
Aged Brass | Cerused White Oak Pulls*





BRASS KITCHEN + LACQUER PANTRY

Offer 
Shown in Aged Brass | High Polished Lacquer

*Kitchen Cabinetry with Contour Pulls
+ Knife Edge Pulls
Pantry with Warm Brass Inlays,
Turned Knobs + Contour Inlay Pulls*



*Solid Wood Dividers and Faux
Leather Inserts are Standard in
Each Utility Drawer*

*Hand-Polished Lacquered Doors
and Drawers with Integral Pulls*







COLLECTOR'S KITCHEN™

Offer

Shown in Bleached Oak | Warm Brass | Aged Brass

Shown with:

Collector's Framed Upper Cabinets + Ribbed Glass
Collector's Shelving with Wood + Glass Shelves
Lower Cabinets with Collector's Style Pulls + Feet
Sink Cabinet with Aged Brass Clad Doors



Maker Style Pulls

THE MAKER KITCHEN™ + COLLECTOR'S SHELVING

Offered in various configurations
Shown in Weathered Grey Oak | Buffed
+ Oxidized Bronze

Ceiling + Wall Mounted Shelving
As Shown: 33"W x 56"H x 18"D
Warm Brass | Glass | Light Bar

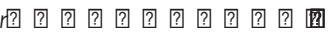








GUNMETAL KITCHEN™

Offer 
Shown in Stainless Steel with Gunmetal
Finish + Oxidized Bronze Contour Pulls
Vista Style Upper Cabinets with Ribbed
Glass + Mirrored Backer





BESPOKE GUNMETAL KITCHEN WITH VISTA CABINETS

*As Shown:
Stainless Steel with Gunmetal Finish, Vista
Style Upper Cabinets + Custom Framed Door,
Drawer + Appliance Panels*



Metal +
Glass Doors
+ Systems

AUTHENTIC MATERIALS.

TIMELESS INSPIRATION.



FRANKFORD PANEL SYSTEM



*As shown: Multi-Panel Installation | 32"W x 102"H x 3"D Panels
Blackened Steel with Mottled Finish | Textured Wire Glass*





FRANKFORD OFFICE FRONT

As Shown: 36"W x 95"H x 46"D
Fixed Panels + Door with Solid Panels
+ Passage Hardware Set
Blackened Steel | Clear Glass
Custom Sizes + Finishes Available



FRANKFORD GRAND BARN DOORS

*Each Door As Shown: 42"W x 150"H x 2"D
With Machined Pulls + Brass Hardware on Patchwork Panels
Blackened Steel | Etched Glass | Brass*



FRANKFORD SHOWER ENCLOSURE WITH TRANSOM

As shown: 60"W x 90"H x 3"D
Blackened Stainless Steel | Low Iron Glass | Machined Bronze Pull

FRANKFORD PARTITION
WITH BI-FOLD DOORS
+ STAINLESS STEEL
CABINETRY

Overall Installation: 145"W x 66"H x 2"D
Blackened Steel | Low-Iron Glass
Stainless Steel | Ribbed Glass

Vista Upper Cabinet in Stainless Steel
+ Ribbed Glass: 30"W x 46"H x 12"D









FRANKFORD WINE ROOM

Overall Installation: 90"W x 98"H x 35"D

Door: 30"W x 97"H x 2"D

Blackened Steel | Bronze | Insulated Glass



Wine Storage Options in Warm Brass + Oxidized Oak

FRANKFORD DISPLAY ENCLOSURE + COLLECTOR'S WINE SHELVING

*Display Enclosure As Shown: 122"W x 102"H x 24"D
Machined Bronze Pulls*

Warm Buffed Brass | Oxidized Oak | Insulated Glass

*Collector's Shelving As Shown: 102"W x 96"H x 20"D
With Light Bars, Wood + Brass Display Shelves
Oxidized Oak | Warm Brass | Light Bars*





FRANKFORD WINE ROOM
+ CABINETRY

As Shown: 144"W x 106"H x 56"D
Doors: 26"W x 92"H x 2"D
Warm Buffed Brass | Insulated Glass
Metal Clad Cabinetry





Railing Systems

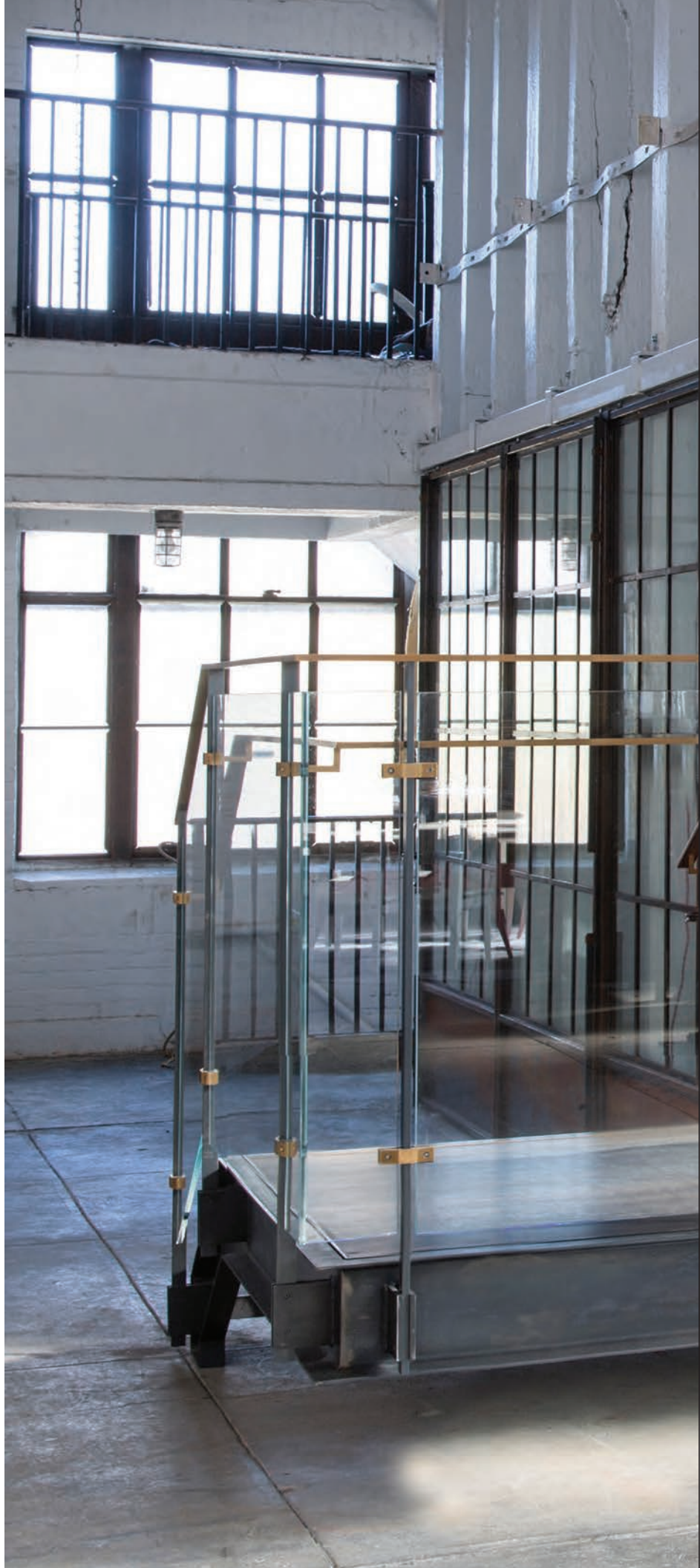
FLEXIBLE INSTALLATIONS.
STRONG POINT OF VIEW.

Bespoke installation of our Machinist's Rail with additional horizontal members in Dark Bronze and Oxidized Bronze. Each of our Railing Systems is designed to be mechanically attached to new or existing stringers and can be customized to your space.



OUTRIGGER RAILING SYSTEM™

*Shown in
Blackened Steel | Oxidized Bronze | Low-Iron Glass*









*Custom Installation
of Outrigger Guardrails*



MACHINIST'S RAILING™

Shown in Blackened + Burnished Steel

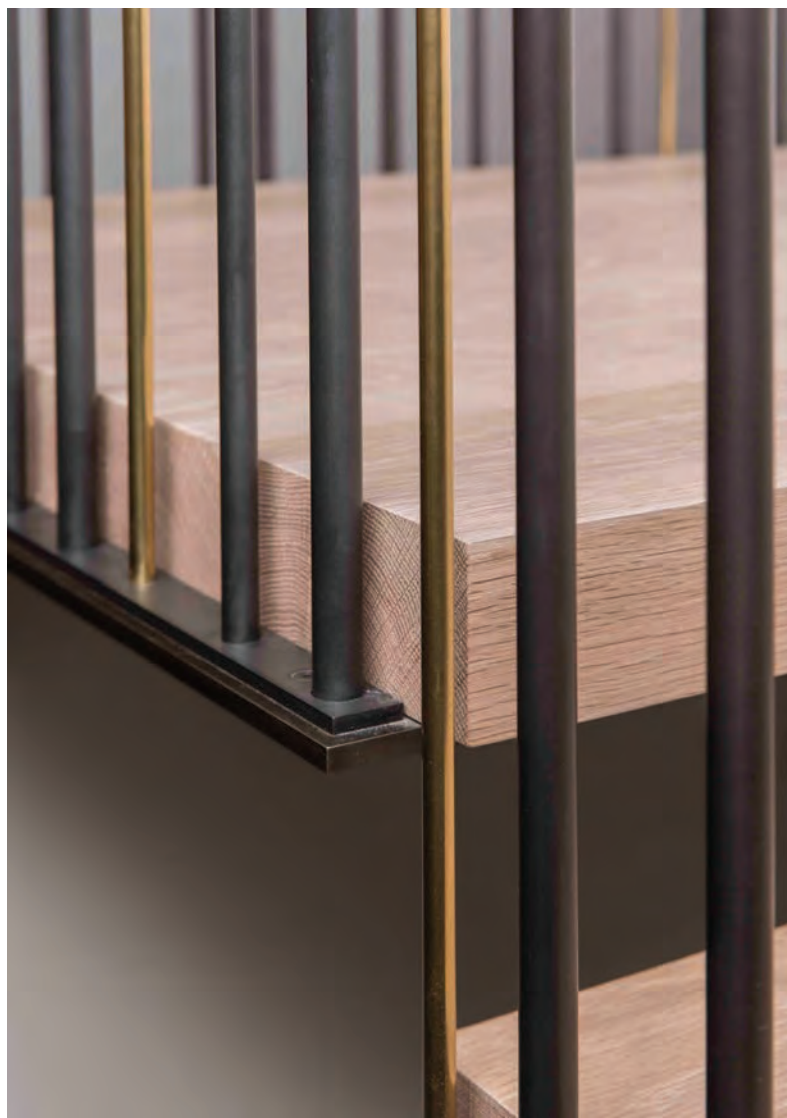






BARCODE RAILING™

*Shown in
Blackened Steel | Polished Brass*







RIBBON RAILING™

*Shown in Blackened Steel
+ Bronzed Steel*



LOUVRE RAILING SYSTEM™

Shown in Blackened Steel





In addition to our Standard Railing Systems, Amuneal fabricates and installs some of the most dynamic residential + commercial stairs.

Our team is ready to assist you with the details for your project with the success of the final installation in mind.

SO I THINK I'M IN LOVE... NOW WHAT!??

It's easy, just give us a call, shoot us an e-mail, or contact us via amuneal.com. We handle all standard and custom requests, design support, pricing, and orders from our Philadelphia fabrication headquarters and our NYC design showroom.

For basic pricing and feasibility, we can typically get you in the right ballpark with just a quick chat or a simple sketch. Providing you with more detailed proposals for complex items can take a few days because we're super nerdy and we want to get everything just right.

If you're like us, and you need to see and feel something before you can decide, we invite you to tour our fabrication facility in Philadelphia and visit our showroom in NYC... just let us know and we'll set it up. If you live a little too far away, or really, really far away, let us know and maybe we can point you in the direction of an installation close to your location.

Once you've made up your mind (and made our day) we will send you drawings and samples to ensure that you know exactly what you are getting and get exactly what you want. We are always happy to review these drawings with you in person or with the help of technology.

Now it gets exciting! We make everything to order in our Philadelphia fabrication facility. Once your order is complete, our internal team supports the logistics for crating, shipping, delivery and installation if required. Don't let the fear of a long-distance relationship scare you off, we routinely ship and support our products around the world...

That's it...super easy. Well, probably easier than
 ? ? ? ? ? ? ? ? ? ? ? ? ? ? ? ?

(By the way, it's Am•u•neal • /'amyōoneel/)

Design and Photography Credits: Mona Ross Berman Interiors / Richard Powers Photography | The MG Design Lab / Up Studios | Goldenberg Photography | Timothy Godbold / Alec Hemer Photography | Mark Tagulao / Jennilee Marigomen | Greyscale Interiors / Joshua McHugh | London Interior's | Studio O+A / Garrett Rowland Photography | Foley&Cox | Ychelle Interior Design | Peter Zimmerman Architects | Jagr Projects | Adam Hunter, Inc. / Trevor Tondro | MNA Architects