

## AURORA COFFEE TABLE



Featuring Cracked Earth, one of our specialist finishes. Its deeply textural nature is reminiscent of the dried out and fissured earth Fiona was inspired by during a safari trip in South Africa. The textured segmented top is complimented by the strong, metal geometric base.



# AURORA COFFEE TABLE VARIATIONS

## VARIATION I



BRONZE CRACKED EARTH TOP

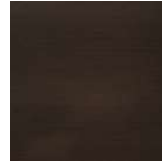


BRONZE FINISH BASE

## VARIATION II

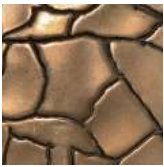


PEWTER CRACKED EARTH TOP



BRONZE FINISH BASE

## VARIATION III



GOLD CRACKED EARTH TOP



BRONZE FINISH BASE

## VARIATION IV

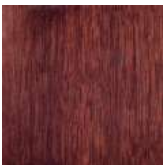


MID-BROWN OAK TOP



BRASS FINISH BASE

## VARIATION V



HIGH GLOSS WALNUT TOP



BRASS FINISH BASE

ALTERNATIVE FINISH COMBINATIONS AVAILABLE, SEE FBC LONDON FINISHES LOOKBOOK FOR REFERENCE OR CONTACT FBC LONDON TO SPECIFY BESPOKE FINISHES FOR YOUR ORDER. (BESPOKE DESIGN FEE CHARGES MAY BE APPLICABLE)

## DIMENSIONS

### SIZE I

390mm H x 1540mm W x 900mm D  
15.35in H x 60.63in W x 35.43in D

### SIZE II

390mm H x 2000mm W x 900mm D  
15.35in H x 78.74in W x 35.43in D

## LEAD TIME & SHIPPING

12 - 14 weeks + shipping. Shipping costs quoted upon confirmation of delivery address.

## NOTES

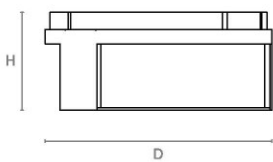
This piece can be tailor made to bespoke sizes and finishes, please enquire for further details.

## FINISHES VARIATIONS

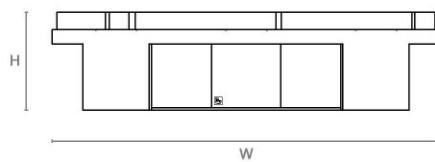
FBC London products are fabricated to the highest quality. The majority of finishes are made and finished by hand and thus some variation is to be expected. FBC London works closely with our fabricators to assure all the finishes are to our typical high standards and closely align to FBC master references. With finishes of natural material such as wood and stone inherent disparities in colour and grain pattern because of variations caused by nature, over which FBC London has no control. FBC London cannot guarantee exact colour, grain, or texture of wood or stone but will work closely with you as our client to highlight this where necessary.

## LINE DRAWINGS

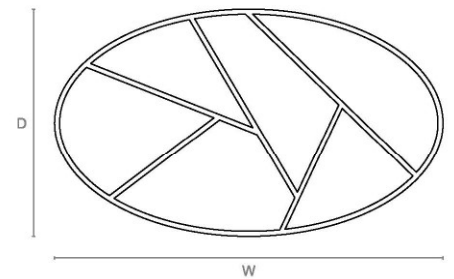
### SIZE I



Side Elevation

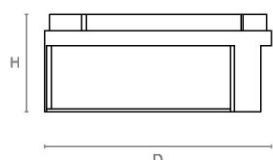


Front Elevation

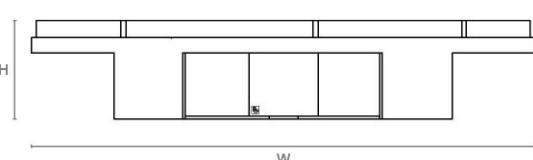


Plan

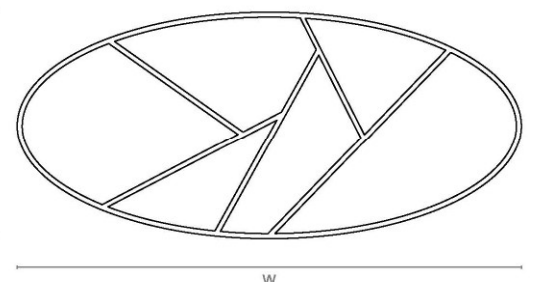
### SIZE II



Side Elevation



Front Elevation



Plan