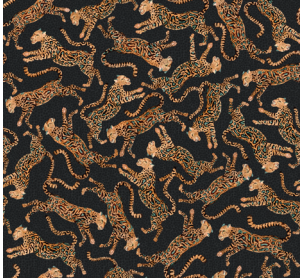


CHEETAH KINGS FABRIC

The King Cheetah is an elusive cat that is rarely seen in the wild. The Cheetah Kings fabric pattern is made up solely of two King Cheetahs who dance across the fabric with entwined tails. The design focuses on the exotic spots and stripes of the cat. We associate this cheetah with myth and folklore because it appears sensuous and elegant in one's dreams.



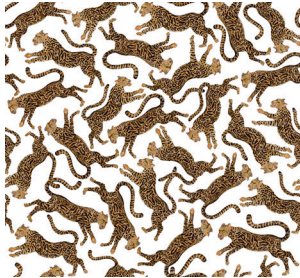
AMBER
VELVET / LINEN



GOLD
VELVET / LINEN



JADE
LINEN



CHALK
LINEN



CORAL
LINEN



STONE
VELVET

CARE INSTRUCTIONS

This product has been printed digitally and will enjoy a longer lifespan with the appropriate care.
 Cleaning Instructions: Dry clean only. Do not submerge. Do not tumble dry. Warm iron on underside when necessary.
 Do not bleach. Avoid prolonged exposure to direct sunlight.

VELVET SPECIFICATIONS

Fabric Composition: 49% Viscose / 42% Cotton / 9% Polyester
 Fabric Width: 55" / Width Repeat: 51"
 Soil/Stain Treated: No
 Durability: 19 000 Martindale
 Fire Rating: CAL 117 Compliant

LINEN SPECIFICATIONS

Fabric Composition: 30% Viscose / 70% Linen
 Fabric Width: 55" / Width Repeat: 51"
 Soil/Stain Treated: No
 Durability: 20 000 Martindale
 Fire Rating: CAL 117 Compliant