

UPHOLSTERY PRODUCT INFORMATION SHEET

HIGH RISE

INSPIRATION

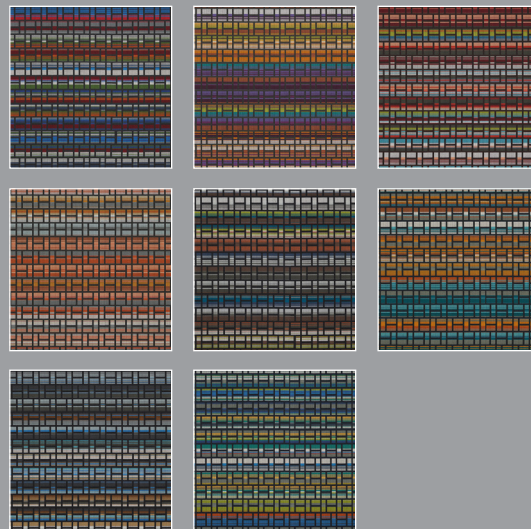
The Arc-Com Design Studio soars to new heights with its latest introduction, pattern **High Rise!**

High Rise infuses an architectural framework with an exciting array of shifting hues and tones. This mid-scale geometric is a wonderfully complex balance of structure and color. A linear vertical ground weave mimics the look of an épingle while a 34-inch vertical repeat allows for endless color play within each individual sku. Installation on smaller pieces will look pleasingly random, as if the pattern's color shifts indefinitely.

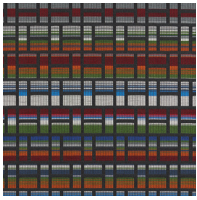
High Rise is stocked in eight colorways that define themselves in color "flavors". Color Sunrise includes a gorgeous array of pinks, peaches, and greys connected with the beginning of each new day. Color Jungle incorporates all of the shades of warm and cool greens associated with the forest. Within color Caribbean, one can find all of the shifting hues of blue seen in warm tropical waters.

Vivid and dynamic, yet structured and tailored, pattern **High Rise** offers designers a sophisticated option to incorporate a multitude of color!

COLOR STORY



PATTERN INFO



Repeat: H: 2 1/4" x V: 31 1/2"
Content: 78% PCR Polyester, 22% Nylon
Finish/Backing: Stain Resistant Finish, Acrylic Backing
AC#: 63940 - 63947
Skus: 8
US\$: 100 yds+: \$45.95
1 - 100 yds: \$49.95

ENVIRONMENT

- Flame Retardant Free
- Antimicrobial | Antibacterial Free
- Non-PFOA, Non-PFOS Water Repellant Finish
- Recycled Content
- This fabric can contribute to LEED certification

TESTING

This fabric has passed:

Flammability: California Bulletin #117-13; UFAC: Class 1/NFPA 260

Abrasion: 150,000 double rubs (Wyzenbeek Method)

Lightfastness: 40 hours

CLEANING CODE: WS

Can be cleaned using 25% bleach / 75% water solution.

OPTIONS

Custom color minimum

- 120 yds for fill change on standard warp (piece size is 30 yds due to weight)
- 1,000 yds to custom dye a warp.
- 240-480 yds to custom dye a fill.

COUNTRY OF ORIGIN:

USA